



SERIE DMR

3.3.1.061.

CODICE DI ORDINAZIONE - DECODING
3.3.1.061 . XX . 000

DMR/061

Valvola
Valve



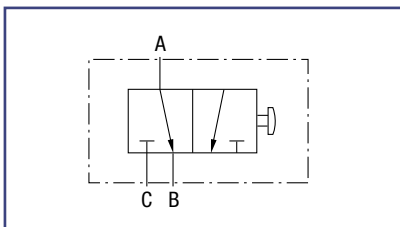
00 = COMANDO MECCANICO
MANUAL OPERATION
01 = COMANDO PNEUMATICO
AIR OPERATION

CODICE BASE/BASIC CODE

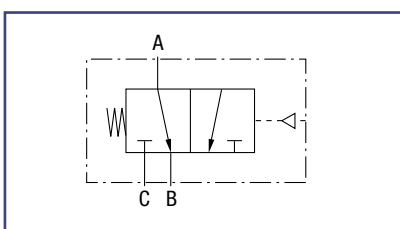
CARATTERISTICHE TECNICHE - TECHNICAL SPECIFICATIONS

Portata nominale Flow rate	130 l/min	Temperatura fluido °C (t) Fluid temperature °C (t)	-25° + 80°C
Pressione massima di lavoro Max working pressure	350 bar	Campo viscosità Viscosity range	12-100 cSt
Pressione massima di picco (<0.1 s) Max peak pressure	400 bar	Filtrazione/Filtering ISO 4406 $\beta_{x=75}$	20/17 25 μm
Pressione pneumatica di lavoro Pneumatical working pressure	4.5 - 10 bar	Peso Weight	2.2 kg
Fluido olio minerale Mineral oil	ISO VG 46		

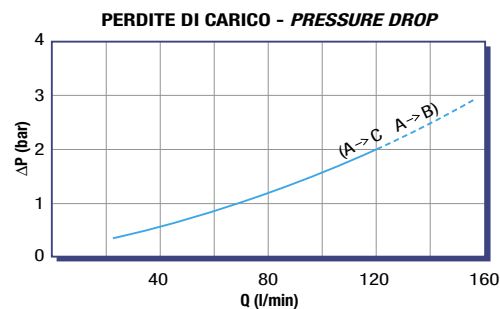
- > Permette di alimentare due cilindri in sequenza su impianti dotati di distributore ad una sola mandata.
- > La valvola è da **pilotare normalmente in assenza di portata**, ovvero la posizione di lavoro va scelta prima della manovra.
- > It allows the control of two in-sequence cylinders in circuits equipped with single outlet distributors.
- > This valve has to be **normally piloted without oil flow**: the work position has to be selected before operation.



Cod. 3.3.1.061.00.000



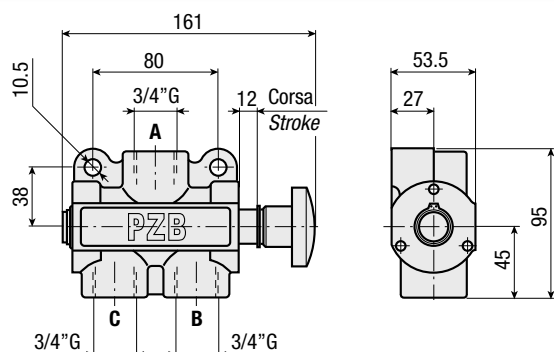
Cod. 3.3.1.061.01.000



RILIEVI ESEGUITI CON OLIO ISO VG 46 A 50° C ($\nu=30$ cSt)
THE ABOVE SPECIFICATIONS REFER TO OIL TYPE ISO VG 46 AT 50° C ($\nu=30$ cSt)

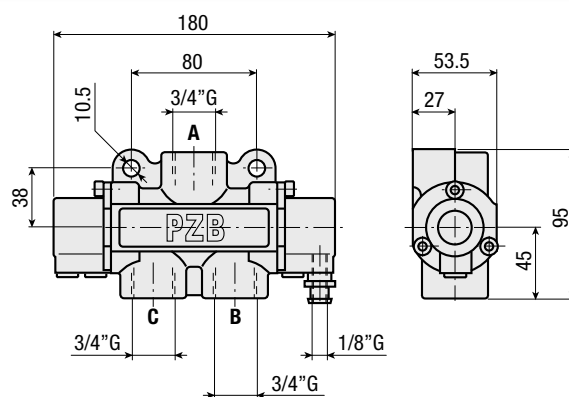
DEVIATORE MECCANICO - MANUAL OPERATION

Cod. 3.3.1.061.00.0000



DEVIATORE PNEUMATICO - AIR OPERATION

Cod. 3.3.1.061.01.0000



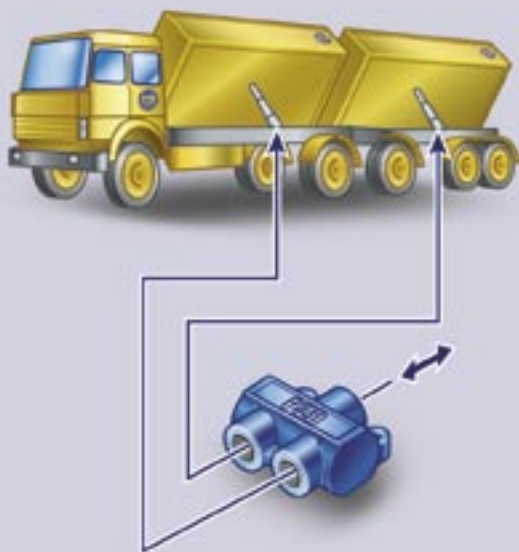
SCHEMI PER IL MONTAGGIO DEL DEVIATORE - DIAGRAMS FOR DIVERTER VALVE FITTING

Il deviatore a 3 vie consente la salita e discesa dei due cassoni singolarmente.

Da montare in linea, dopo il distributore principale.

The diverter valve allows the two tipping bodies to be tipped and lowered separately.

The diverter valve is fitted in-line, after the main valve.



Il deviatore a 3 vie consente il funzionamento di gru o ribaltabile.

Da montare in linea, tra la pompa e i distributori.

The diverter valve allows to operate either the crane or the tipper.

The diverter valve is fitted in-line, between the pump and the control valves.

